

OKLAHOMA DEPARTMENT OF ENVIRONMENTAL QUALITY

# PUBLIC NOTICE

January 11, 2019

## REQUEST FOR PUBLIC COMMENT ON A PROPOSED MODIFICATION TO OKLAHOMA'S WATER QUALITY MANAGEMENT PLAN FOR THE MCCURTAIN COUNTY RWD #5 WASTEWATER TREATMENT FACILITY

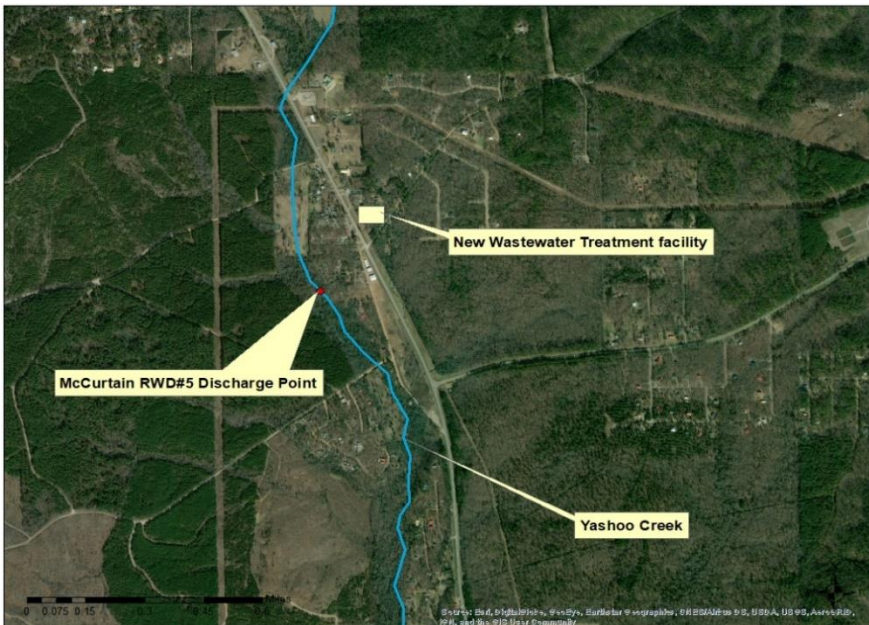
Public Comment Period Begins: January 11, 2019

**Public Comment Period Ends: February 25, 2019**

**Permitee:** McCurtain County RWD #5, 9180 N US Highway 259, Broken Bow, OK 74728

[Facility Legal Description: W1/2, NE1/4, SW1/4, S26, T05S, R24E, McCurtain County, OK]

**Receiving waters and location:** Yashoo Creek (OK410200010230\_00) (Latitude: 34°8'54.768"N; Longitude: 94°45'6.95 "W).



The McCurtain County Rural Water District #5 (RWD#5) requests a sewer discharge permit for a new wastewater treatment facility. Due to the increasing infrastructure and demand for services in the area, the McCurtain County RWD#5 plans to add a wastewater treatment facility to better serve the growing community. The discharge would flow into [Yashoo Creek \(OK410200010230\\_00\)](#). Based on the projected population growth and to ensure compliance with DEQ standards, the McCurtain County RWD #5 requested a discharge flow of **0.40 MGD**. The [Oklahoma Department of Environmental Quality](#) (DEQ) conducted a waste load allocation (WLA) study. A waste load allocation is the maximum amount of pollutants in treated wastewater

that can safely be discharged into a waterbody without adversely affecting its quality.

DEQ, along with the U.S. Environmental Protection Agency (EPA), has evaluated the Yashoo Creek and Canadian River to develop these recommended maximum amounts that may be discharged into it during the following seasons:

**Summer Limits** (June – October): 15.0 mg/l CBOD<sub>5</sub>, 7.0 mg/l NH<sub>3</sub>, 5.0 mg/l DO

**Spring Limits** (April – May): 18.0 mg/l CBOD<sub>5</sub>, 12.0 mg/l NH<sub>3</sub>, 6.0 mg/l DO

**Winter Limits** (November – March): Secondary Treatment (25 mg/l CBOD<sub>5</sub>, 30 mg/l TSS)

The McCurtain County RWD #5 will be required to submit monthly Discharge Monitoring Reports (DMR) to the Oklahoma Department of Environmental Quality. The DMR will ensure that the beneficial uses will be maintained in Yashoo Creek (also called Yashau Creek).

The comment period will be open for 45 days. If you have any concerns regarding these proposed limits, please submit your comments in writing by the end of the workday on **February 25, 2019** to:

Yingjia Zhu, Ph.D., P.E.  
 Water Quality Division  
 Oklahoma Department of Environmental Quality  
 P.O. Box 1677  
 Oklahoma City, OK 73101-1677  
 (405) 702-8280  
 E-mail: [Yingjia.Zhu@deq.ok.gov](mailto:Yingjia.Zhu@deq.ok.gov)

You may also request a public meeting in writing. If there is a significant degree of public interest, DEQ will schedule a public meeting. After evaluating comments received and making any necessary changes, the WLA will be submitted to the U.S. Environmental Protection Agency (EPA) for final approval.

McCurtain County RWD#5 Wastewater Facility		CITY/TOWN:	Hochatown
FACILITY LEGAL LOCATION:	W <sup>1/2</sup> , NE <sup>1/4</sup> , SW <sup>1/4</sup> , S26, T05S, R24E.	COUNTY:	McCurtain County
POD LOCATION:	W <sup>1/2</sup> , NE <sup>1/4</sup> , SW <sup>1/4</sup> , S26, T05S, R24E	SEGMENT:	410200
POD LATITUDE:	34° 8'54.768"N	POD LONGITUDE:	94° 45'6.95 "W
NPDES #:	Pending	FACILITY ID #:	Pending
CURRENT TREATMENT PROCESS:	Secondary Treatment		
PRESENT AVG. DAILY FLOW (MGD):		2010 CENSUS POPULATION	
DESIGN AVG. DAILY FLOW (MGD):	0.40	2040 PROJECTED POPULATION:	3,800
RECEIVING STREAM:	Yashoo Creek (OK410200010230_00)		
STREAM CLASS:	Perennial	7-day 2-year low flow in MGD (7Q2):	0
DMA:	Pending	DMA STATUS:	Pending
WASTELOAD ALLOCATION	Summer (Jun - Oct): 15.0 mg/l CBOD <sub>5</sub> , 7.0 mg/l NH <sub>3</sub> , 5.0 mg/l DO Spring (Apr - May): 18.0 mg/l CBOD <sub>5</sub> , 12.0 mg/l NH <sub>3</sub> , 6.0 mg/l DO Winter (Nov - Mar): 25 mg/l CBOD <sub>5</sub> , 30 mg/l TSS (Secondary Treatment)		
RECOMMENDED TREATMENT ALTERNATIVES			
A)	Lagoon Secondary		
B)			
		EPA APPROVAL DATE:	Pending
		RECORD LAST UPDATED:	06/25/2018



You are receiving this notice because you are either on DEQ's list to receive all public notices about proposed Waste Load Allocations or you are located downstream in an affected watershed. If you are receiving this notice in error, are getting multiple notices, or do not want to receive future notices, please let us know. In addition to notices about new or changes in 208 Plans for facilities, DEQ's Watershed Planning Section sends out public notices about proposed changes in the Integrated

Scott Thompson  
Executive Director



Mary Fallin  
Governor

## OKLAHOMA DEPARTMENT OF ENVIRONMENTAL QUALITY

Report, proposed TMDLs, 404 projects, 401 Certification, and proposed changes in the CPP.

If you would like to receive any or all of these public notices via e-mail, please send your e-mail address to [Water.Comments@deq.ok.gov](mailto:Water.Comments@deq.ok.gov). Also, please let us know if you want to receive notices for the entire State or just for your [watershed](#). **By receiving PDF public notices via e-mail, you will help save money and the environment by reducing the amount of paper we use to mail them.** In addition to helping the environment, you will be able to click on helpful FYI hyperlinks.

---



**Note to newspapers:** This notice is for your informational purposes only. **Do not publish in the legal section or as a legal notice.**